

KORG Pa80 Card Converter

The Pa80 Card Converter allows to convert Pa80 PCM Card data to data that Pa1X, Pa2X or Pa800 can read. This involves three phases: installing the Pa80 Card Converter application, backing-up your Pa80 PCM card, and converting it through the Pa80 Card Converter.

Installing the Pa80 Card Converter

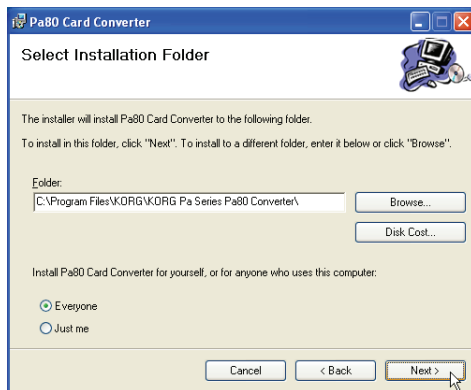
Before running the Pa80 Card Converter, you must install it in your PC. To run this application, Windows® XP/Vista® must be installed in your PC.

1. Double click on the Pa80_Card_Converter.exe installer to install the Pa80 Card Converter application. The following dialog appears.



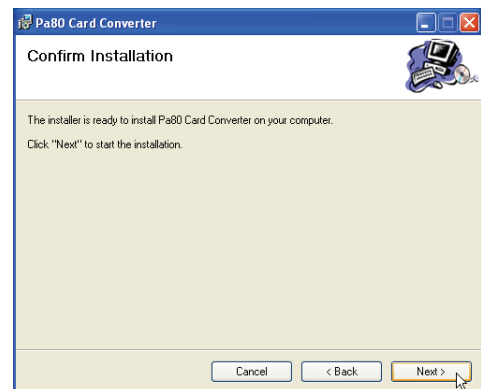
Click Next to continue.

2. In the next dialog, choose a location on the hard drive where to install the Pa80 Card Converter application.

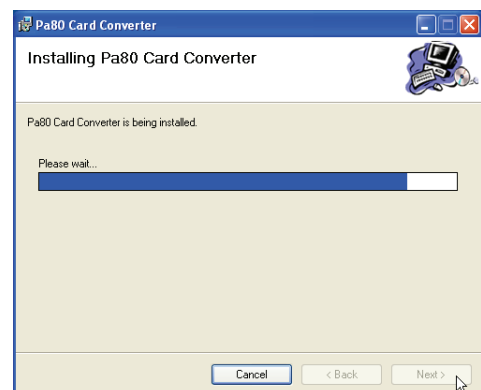


Click Next to continue.

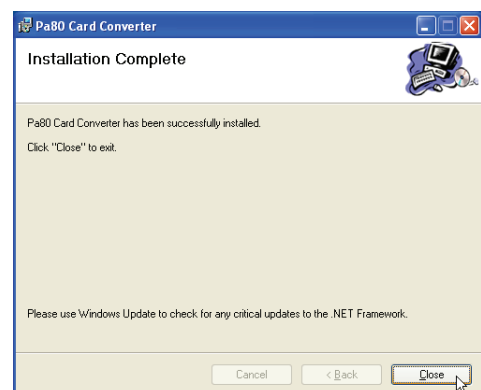
3. The following dialog appears, asking for confirmation.



Click Next to confirm. The following dialog appears, with a progress bar showing the installation progress.



4. When done, the following dialog appears.



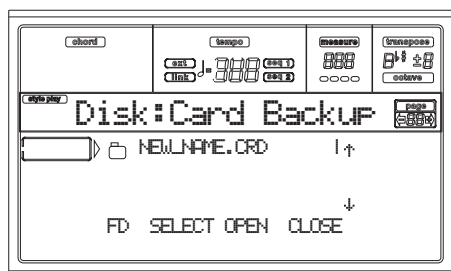
Click Close, and the installation is done.

Creating a card's backup

Before converting Pa80 data to a format that can be read by Pa1X, Pa2X or Pa800, Pa80 PCM Cards must be backed up to a series of floppy disks. Here is how to do.

Note: Depending on the card's content, backup operations may take over 15 minutes to complete. Please wait until it is finished, or the floppy disks will be damaged.

1. Insert the Flash Card to be backed up into the FLASH CARD slot on the back of the Pa80.
2. Press the DISK button to access the Disk mode.
3. Go to "Page 10 - Card Backup".



4. Use the F1 button to select the target device (FD).
5. Press F2 (Save) to confirm. The "Are you sure?" message will appear. Press ENTER to confirm, or EXIT to abort.

6. Insert the various disks as required by the instrument., and press ENTER to continue (this message appears even if a disk is already inserted):

Insert 1.4MB FD #1
and Press Enter

If the floppy disk is not empty, Pa80 asks if you want to format it:

Disk not empty!
Sh+Enter to format

Keep SHIFT pressed, and press ENTER to format the disk. Pa80 tries a Fast Format, and makes a Full Format if the former is not possible.

7. During the Backup, the "Working..." message will appear in the display, showing you the operation's progress.

Working...
0%

Since the backup data is compressed, it is not possible to know how many disks you will need in advance. When finished, label the disks with progressive numbers, and keep them in a safe place.

Warning: If you remove the card during the Backup, the operation is aborted.

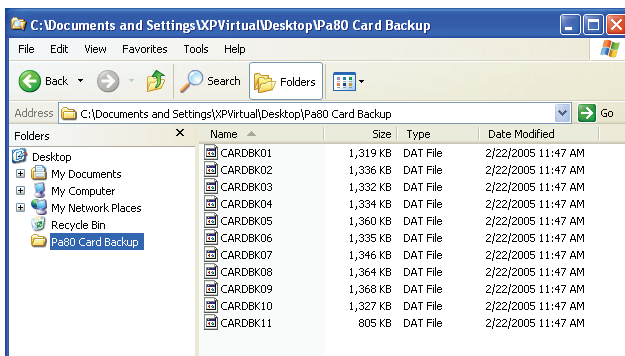
The Pa80 Card Converter

When you have installed the Pa80 Card Converter application, and backed up your Pa80 PCM card data, you can start converting the data.

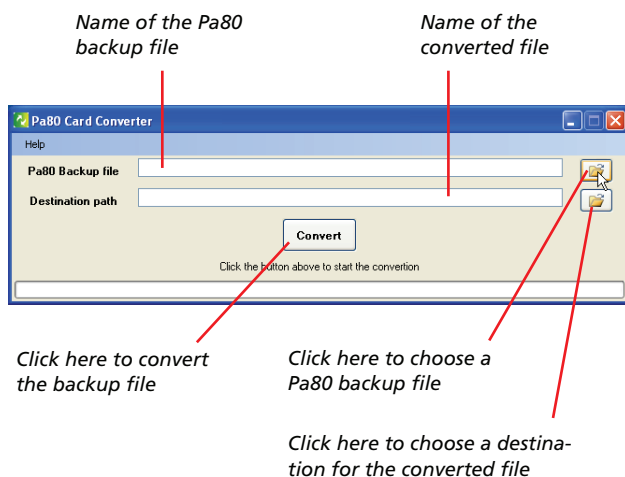
Note: Only User Sounds contained into the card are converted; User Sounds residing inside the instrument are not converted. As a consequence, if the Styles, Performances and STSs contained in the card were pointing to User Sounds contained in the instrument, they must be reprogrammed after conversion.

Note: Before starting conversion, be sure that no files or folders is in Read-Only or Hidden status. To check, right-click the files or folders to open the Properties window (General tab).

1. First of all, copy all the Pa80 floppy disk's content into a single folder in your PC's hard drive. Your original data must match the data structure shown in the following File Explorer's window:



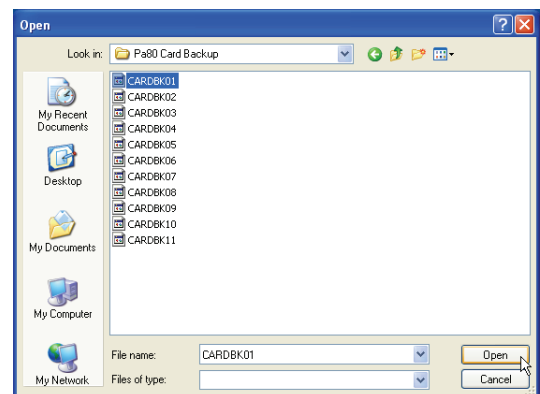
2. Double click on the Pa80 Card Converter application to run it. The Main window appears.



3. Click the Pa80 Backup File button:



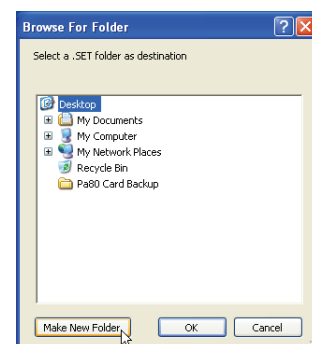
4. A standard file selector appears. Choose the first backup file to be converted:



5. Click the Destination Path button, to select or create a ".SET" folder where to save the converted files:

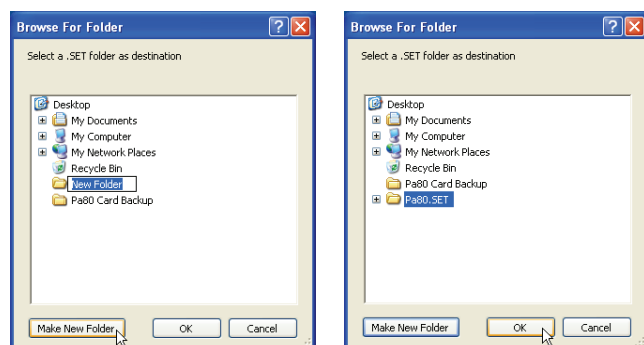


After having clicked the button, a file browser appears:

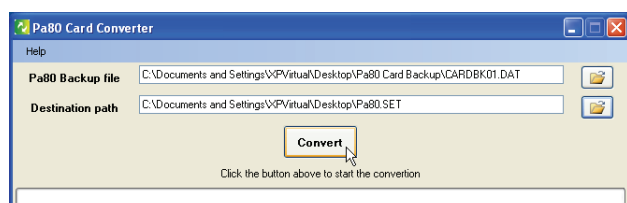


If you want to save into an existing ".SET" folder, choose it and click OK. **Be warned that this action will delete all the data contained into the selected folder!**

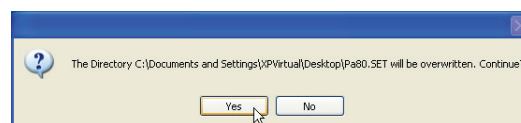
If you prefer to create a new “.SET” folder, click the Make New Folder button and assign a name to the new folder, as shown in the following example:



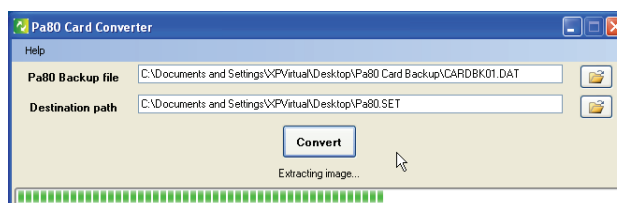
- When a source and destination folders are selected, click Convert to start conversion.



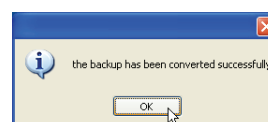
- A warning message will appear, informing you that all data at the destination will be overwritten and deleted. Click Yes to continue.



- The conversion begins:



- When done, a message confirms the operation was successfully completed.



- Now you can load the resulting “.SET” folder as any other Pa1X, Pa2X, or Pa800 data. Please refer to the respective User’s Manual for details.

Some notes about data conversion

While most data are converted by Pa80 Card Converter, data conversion is never a one-to-one match. Please consider the following issues.

- All data are converted in Pa1X format, to ensure compatibility with all Pa-Series instruments released after Pa80. For example, Pa800 and Pa2X can read Pa1X data.
- Pa80 PCM Samples contained in the card are converted to Pa1X User (RAM) PCM Samples.
- Pa80 Programs contained in the card are converted to Pa1X User Sounds, and are copied to the User banks. Please note that only Programs contained in the card are converted; User Programs based on Card Samples, contained in the Pa80 internal User banks, are not converted.

- Pa80 Styles contained in the card are converted to Pa1X User Styles, and are copied to the User banks. Program Change data referring to Card Programs are converted, so that the Style tracks recall the new User Sounds.

- Pa80 Performances and STSs contained in the Card Styles, are not converted. Therefore, only Style tracks are converted, while Keyboard tracks are not.